



- *ORDER*
- *QUOTE*

ONLY COMPLETE LEGIBLE
ORDERS CAN BE PROCESSED

PHONE XXX XXX XXXX
FAX: XXX-XXX-XXXX

SOLD TO _____ DATE _____ SHIPPING ADDRESS _____
 NAME _____ NAME _____
 STREET _____ STREET _____
 CITY/STATE _____ CITY/STATE _____
 PHONE # _____ ZIP _____ PHONE # _____ ZIP _____
 E-MAIL _____ E-MAIL _____

ROYAL MESH

- GREEN
- BLUE
- TAN

EMOPEROR SOLID

- GREEN
- BLUE
- TAN
- GREY

ANCHOR/DECK TYPE

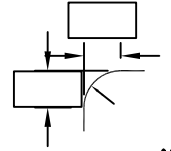
- CONCRETE
- WOOD DECK
- PAVERS

POOL CORNER TYPE & SIZE

IF POOL CORNERS ARE GREATER
THAN 2' RADIUS OR DIAGONAL.
PLEASE SPECIFY THE TYPE AND SIZE.



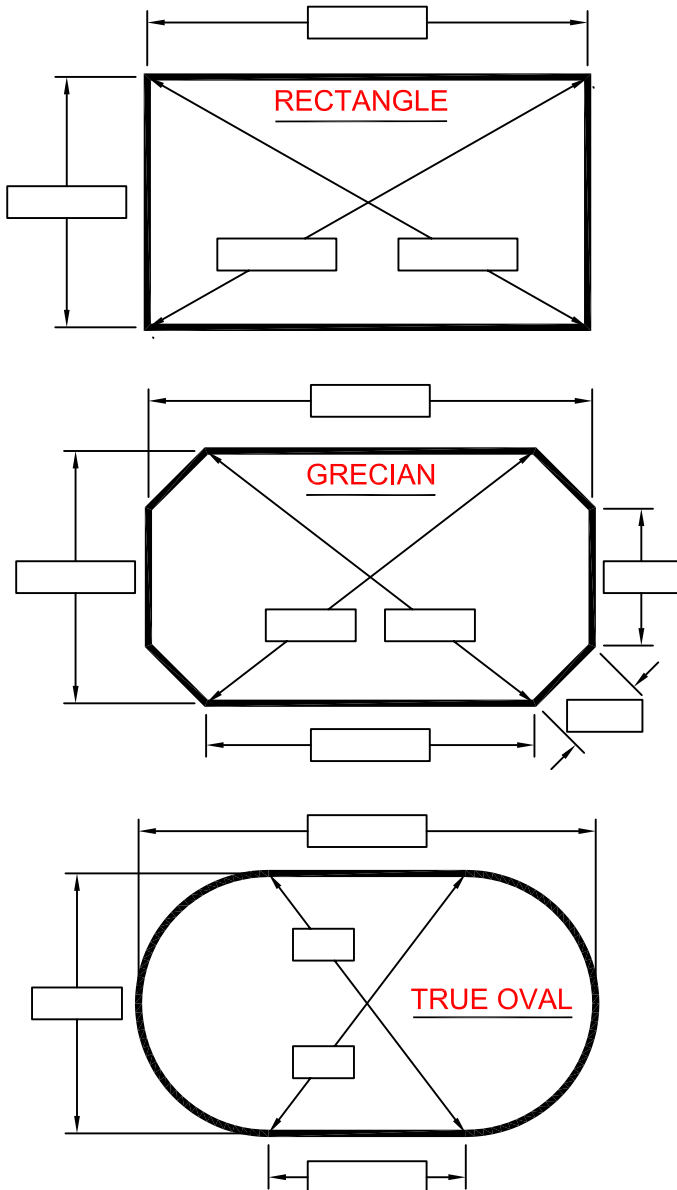
DIAGONAL
DISTANCE
(INCHES)



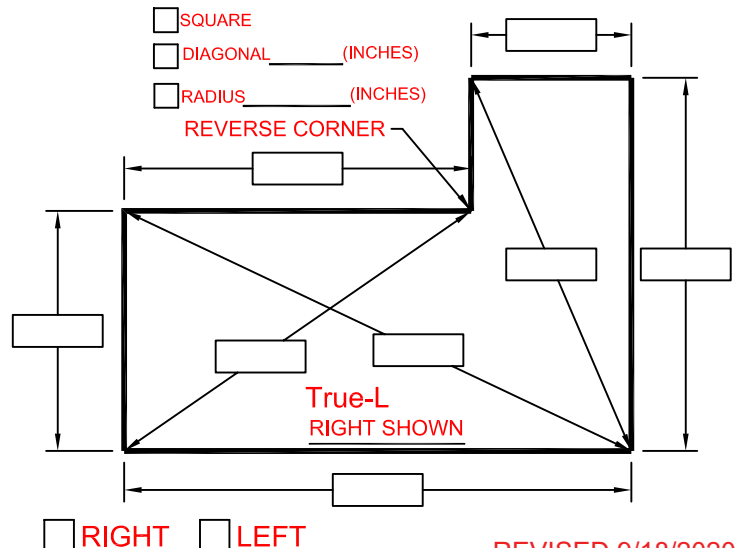
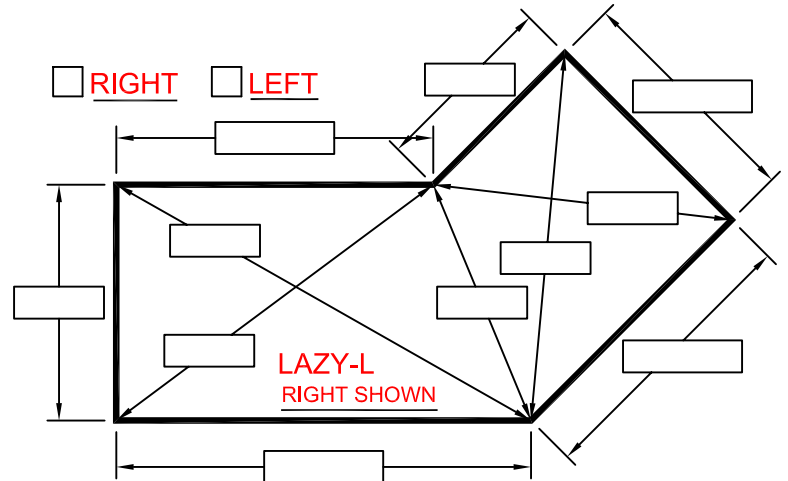
RADIUS
(INCHES)

KING 99 MESH

- GREEN
- BLUE
- TAN



SKETCH IN STEP LOCATION AND STEP DIMENSIONS (SIZE & LOCATION)
 DIRECTION IS DETERMINED BY STANDING IN SHALLOW END



1. Begin with a freehand sketch indicating inside pool dimensions. The sketch should include pool orientation and the "A-B" line location. Include deck area, and any obstructions within 3' of the waterline.

A photo of the pool is needed when rocks, spas or anything out of the ordinary exists. It's recommended to take pictures of the numbered points at obstructions.

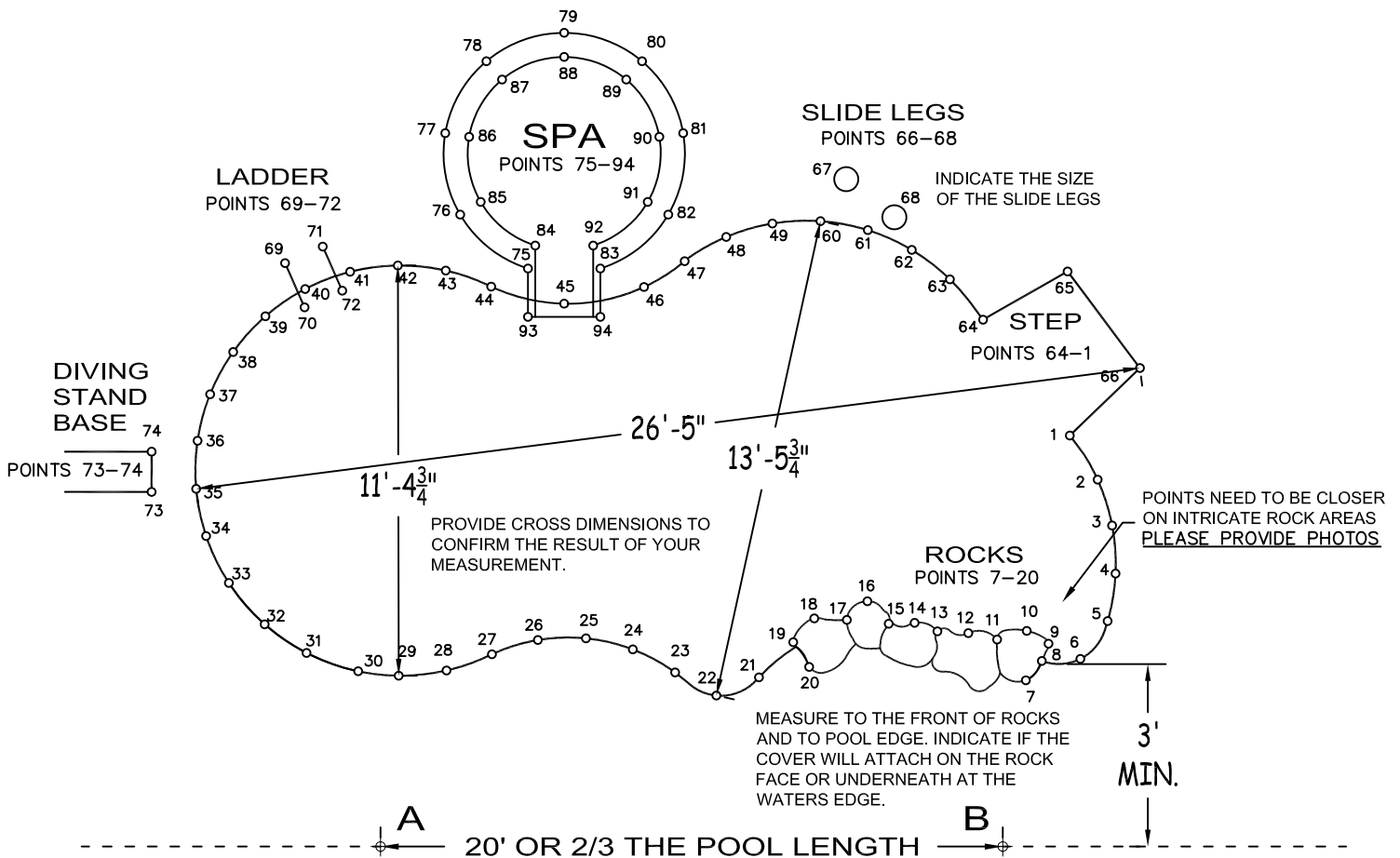
2. Establish two points, "A-B" with "A" on the left as shown. The "A-B" line must be 3' away from the pool and 2/3 the length of the pool; 20'-25' is typical (show this on the sketch). To mark "A-B" points on deck - use chalk marks, on ground - use stakes in the dirt. Do not remove the "A-B" points until the measurements have been confirmed and approved. NOTE: The "A-B" line must never cross the pool line and should be approximately 3' away from the pool at the closest point (4' to 5' away from pools over 44' long).

3. Using chalk, mark and number points along the inside edge of the pool at approximately 2' intervals. Number all corner points, ladders, handrails, grabrails, slide legs, rocks, spillways, spa walls separating spa and pool, fill spout and dive stand. 1' intervals should be used in small or tight radius areas. At least 3 points along straight walls.

4. Measurements are now taken from point "A" to #1, then point #2, and all the way around the pool. Then measure from point "B" to same point #1 and then #2, as you did for point "A". Measurements are listed in column format as shown.

5. Take measurements between two known points to determine length and width cross dimensions of the pool. Cross dimensions to any raised beam obstacles are recommended.

NO.	A	B
1	25'-2"	20'-8"
2	26'-10"	19'-3"
3	28'-5"	18'-6"
4	30'-4"	17'-11"
5		
6	CONTINUE	CONTINUE
7	CONTINUE	CONTINUE
8	CONTINUE	CONTINUE
9	CONTINUE	CONTINUE
10		
11		
12		
13		
14		
15		
16		
17		
18	↓	↓
19		
20		



NOTE: MAKE SURE THE A-B LINE IF EXTENDED IS NOT CROSSING THE PERIMETER OF THE POOL.



NAME: _____

DISTANCE FROM "A" to "B" _____

	A	B
1		
2		
3		
4		
5		
6		
7		
8		
9		
10		
11		
12		
13		
14		
15		
16		
17		

	A	B
18		
19		
20		
21		
22		
23		
24		
25		
26		
27		
28		
29		
30		
31		
32		
33		
34		
35		

	A	B
36		
37		
38		
39		
40		
41		
42		
43		
44		
45		
46		
47		
48		
49		
50		
51		
52		
53		

	A	B
54		
55		
56		
57		
58		
59		
60		
61		
62		
63		
64		
65		
66		
67		
68		
69		
70		
71		

CROSS DIMENSIONS #1: FROM POINT # _____ TO POINT # _____ LENGTH _____

CROSS DIMENSIONS #2: FROM POINT # _____ TO POINT # _____ LENGTH _____

CROSS DIMENSIONS #3: FROM POINT # _____ TO POINT # _____ LENGTH _____

CROSS DIMENSIONS #4: FROM POINT # _____ TO POINT # _____ LENGTH _____

